



Customers trust IIA to stay abreast of the regulatory environment. When changes are on the horizon, like those affecting the crane industry in Ontario, Canada, our team can help you navigate those changes and remain in compliance.

We also recently expanded our [Engineering Services](#) and opened new, state-of-the-art testing labs in [Alachua, Florida](#), and [Danville, Virginia](#), to better serve customers.

In this newsletter, you can learn more about:

- [Changes to Ontario crane inspection regulations coming in 2024](#)
- [3 reasons](#) to hire a full-service crane company
- The Top 5 reasons customers need [reverse engineering](#)
- Why ARMUT® is the answer for [corrosion mapping of elbows](#)
- Why we're serious about [amusement park safety](#)
- Why you should consider a [fleet safety analysis](#) (and how IIA's new software, FIIT, will improve reporting)
- And you'll get to know [Eric Houston](#), your source for engineering solutions

From reverse engineering to crane compliance, the measure of our success will always be your satisfaction.

Sincerely,

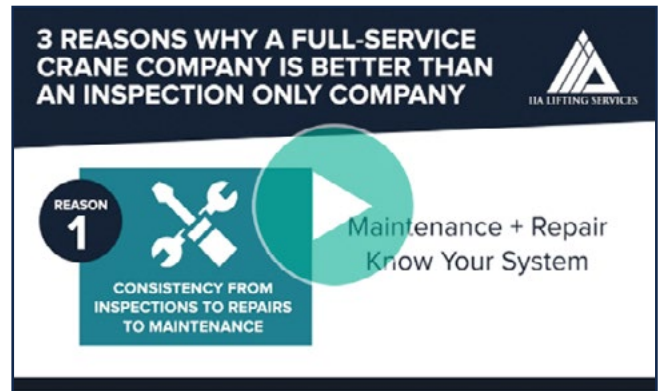
Doug Vail

Chief Revenue Officer
Industrial Inspection & Analysis



Proprietary ARMUT® — For Answers About Elbows

Corrosion mapping is a helpful technique. However, elbows and components with unique or complex configurations present inherent challenges to corrosion mapping. Our patented ARMUT® system offers a reliable, time-saving alternative for corrosion mapping of piping elbows. Learn more about our proprietary [ARMUT technology](#) and [see ARMUT in action](#).



3 Reasons to Hire a Full-Service Crane Company

Overhead cranes must be inspected on an annual basis, but why hire a full-service crane company versus an inspection-only company? We break down three reasons in this [brief video](#).



Ontario 

Z150-16
Amendment to O.Reg.213/91

Ontario Crane Regulations: What's Changing?

On January 1, 2024, significant changes to Ontario crane inspection regulations (O.Reg.213/91) will take effect. The amended law requires owners to perform not only structural inspection of cranes, but also operational and mechanical inspections under the supervision of a professional engineer. [Learn more](#) about the coming changes and how IIA can help you stay in compliance. For a deeper dive, read a white paper from Famarz Rahiminia, General Manager of IIA's Canadian Services.

We're Serious about Amusement Park Safety

When it comes to amusement rides, we are serious about safety. Our certified experts use a wide range of tools and technologies to accurately detect surface and subsurface defects — without compromising the ride's ability to function. Learn why you should take IIA along for the ride when it comes to the safety of amusement parks, carnivals and fairs.



Prioritize & Plan Repairs with a Fleet Safety Analysis

Not all defects are created equal. Our Fleet Safety Analyses (FSAs) classify defects into four categories, based on their significance and location. The detailed data we provide helps fleet managers know when to prioritize or defer repairs and when to consider selling or replacing units. Our new Fleet Industrial Inspection Tracker (FIIT) software enhances our ability to track inspections and sort data for user-friendly, actionable reports. Learn more about the [benefits of an FSA](#).

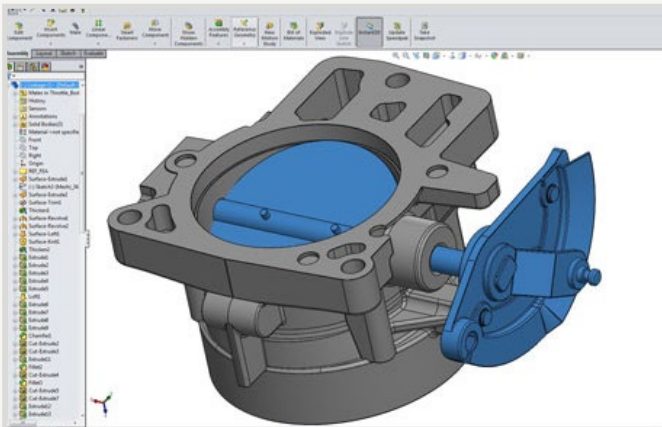


Houston: “We Have a Solution”

Our Engineering Services team includes some of the brightest minds in the business — including our newest addition: [Eric Houston](#). A leading expert in structural evaluations of piping and pressure vessels, Eric enjoys working with IIA’s NDE team to help customers navigate run/repair/replace decisions. As he says, “engineering and NDE pair so well together. It’s really easy to exceed your customer’s expectations when you’re doing both of those activities as one company.” [Get to know Eric](#).

What Our Customers Are Saying

“Thanks for the fast response to our short-notice inspection requests and having trained and knowledgeable inspectors to work with us.”



Reverse Engineering: When You Need to Get from Point B to Point A

From collectible cars to custom-fit prosthetics, [reverse engineering](#) is used — by both corporations and individuals — for a variety of reasons. [Learn about the top 5 scenarios we see at IIA.](#)

Let’s Connect

We want to hear about your inspection and engineering needs. Whether you have a quick technical question or need urgent, on-site assistance, we’re here for you. Call us at **470-646-6264** or complete our [online form](#) and we’ll get back to you within 24 hours.

Be sure to follow us on [LinkedIn](#) to learn about the latest tools and techniques we’re using to solve our clients’ problems and make the world safer.

